

DOMESTIC OPERATIONS CAPABILITIES 2024



COMMUNITY-BASED

NEBRASKA-FOCUSED

GLOBALY-ENGAGED

NEBRASKA

Good Life. Great Strength.

NEBRASKA MILITARY DEPARTMENT

TABLE OF CONTENTS

National Guard Domestic Operations Overview and Process.....	1
Categories, Missions, Core Capabilities.....	2
FEMA Emergency Support Functions (ESF).....	3
Historical Review.....	5
National Incident Management System (NIMS).....	13
National Incident Management System and NIMS Components.....	14
Incident and Resource Typing.....	15
Resource Management and Resource Typing Library Tool.....	16
Community Lifelines.....	17
Domestic Operations Command and Control Structure.....	18
Military Process Request.....	19
Cost Table, Abbreviations and Acronyms.....	21
Task Forces.....	25
Aviation.....	26
Civil Support Team.....	28
CERFP.....	30
National Guard Reaction Force.....	32
Defense Cyberspace Operations.....	34
National Guard Wildland and Fire.....	36
National Guard Severe Weather.....	38
Joint Reception, Staging and Onward Integration.....	40
Mission Ready Packages / Strikeforce Teams.....	43
CST Type 1 Hazmat Entry Team.....	44
CST Mobile Analytical Laboratory System.....	45
Route Debris Clearance Team.....	46
Explosive Ordnance Disposal Team.....	47
Joint Incident Site Command Capabilities.....	48
National Guard Response Force.....	49
Wildland Fire Hand Crew.....	50
Emergency Management.....	51
Military Police.....	52
Defense Cyberspace Operations.....	53
Nebraska National Guard Individual Resources.....	55
Safety and Security.....	56
Food, Water, and Shelter.....	58
Health and Medical.....	60
Energy (Power and Fuel).....	61
Communications.....	62
Transportation.....	64
Hazardous Materials.....	66
Nebraska National Guard Readiness Centers.....	70

NEBRASKA

Good Life. Great Strength.

NEBRASKA MILITARY DEPARTMENT



NATIONAL GUARD DOMESTIC OPERATIONS (NGDO) OVERVIEW AND PROCESS

NEBRASKA

Good Life. Great Strength.

NEBRASKA MILITARY DEPARTMENT

CATEGORIES, MISSIONS, CORE CAPABILITIES

Under the provisions of State and Federal Law, National Guard Personnel and Equipment are available to be utilized by the Governor of Nebraska in response to State Emergencies and to support civil authorities when deemed necessary.

National Guard Domestic Operations (NGDO) generally fall into three broad categories of:

1. Homeland Defense – for which the Department of Defense serves as the primary federal agency with military forces used to conduct military operations in defense of the Homeland.
2. National Guard Civil Support – for which the National Guard normally serves in a supporting role to other primary state or federal agencies by providing assistance to U.S. civil authorities at the federal, state, tribal, and local levels.
3. National Guard Baseline Operating Posture – in which the National Guard conducts required planning, training, and exercises, as well as some ongoing mandated domestic operations such as National Guard Reaction Force (NGRF), Counter Drug (CD), Civil Support Team (CST), and the Chemical, Biological, Radiological, Nuclear, and High Yield Explosives Enhanced Response Force Package (CBRNE CERFP).

National Guard Civil Support Missions may be performed in a State Active Duty or Title 32 (Federal) duty status under the control of the Governor of Nebraska. These missions are conducted to assist in:

1. Supporting civil authorities whose capabilities or capacity is insufficient to meet current requirements with general purpose, specialized, or unique Guard forces or capabilities.
2. Protecting the life, property, and safety of U.S. citizens and U.S. persons.
3. Protecting critical infrastructure.
4. Providing humanitarian assistance during disaster response and domestic emergencies.
5. Providing support to designated law enforcement activities and operations.
6. Providing support to designated events, programs, and other activities.

National Guard Capabilities for Domestic Operations have been categorized into ten (10) core capabilities to ensure adequate response to requests for National Guard Civil Support:

1. Aviation/Airlift
2. Chemical, Biological, Radiological, Nuclear, and High-Yield Explosives (CBRNE) response
3. Command and Control (C2)
4. Communications
5. Engineering
6. Logistics
7. Maintenance
8. Medical
9. Security
10. Transportation



FEMA EMERGENCY SUPPORT FUNCTION (ESF)

- 1 ESF 1 Transportation
- 2 ESF 2 Communications
- 3 ESF 3 Public Works and Engineering
- 4 ESF 4 Firefighting
- 5 ESF 5 Emergency Management
- 6 ESF 6 Mass Care, Emergency Assistance, Housing, and Human Services
- 7 ESF 7 Resource Support
- 8 ESF 8 Public Health and Medical Services
- 9 ESF 9 Urban Search and Rescue
- 10 ESF 10 Oil and Hazardous Materials Response
- 11 ESF 11 Agriculture and Natural Resources
- 12 ESF 12 Energy
- 13 ESF 13 Public Safety and Security
- 14 ESF 14 Community Recovery and Mitigation
- 15 ESF 15 Military Support





NEBRASKA

Good Life. Great Strength.

NEBRASKA MILITARY DEPARTMENT



HISTORICAL REVIEW

NEBRASKA

Good Life. Great Strength.

NEBRASKA MILITARY DEPARTMENT

NEBRASKA NATIONAL GUARD HISTORICAL OVERVIEW



A member of the Nebraska Air National Guard's explosive ordnance disposal team talks to Nebraska governmental leaders about the equipment he and other Airmen like him wear while performing their mission. Photo by Lieutenant Colonel Kevin Hynes.

Nebraska National Guardsmen have activated for state emergencies since 1880, including natural disasters, civil strife, and medical emergencies. There was a significant increase in the use of the National Guard beginning in the 1950s. Nebraska mobilized Guardsmen five times prior to 1900, on thirteen occasions from 1900 to 1945, and no less than 352 times from 1950 through 2021. The state's increased reliance on the National Guard beginning in the 1950s coincided with it receiving

additional equipment, which increased its capabilities to respond to domestic emergencies. The following is a condensed history, with responses categorized by the type of incident. On occasion, the Guard has responded to incidents that do not fit into these categories, such as the Ips Beetle infestation of the Halsey Forest in 1967, and failures of civilian infrastructure such as power failures in 1966, 1969, and 1973.



SEVERE WEATHER RESPONSES

The NENG has responded to 129 instances of severe weather, to include 48 floods, 24 tornadoes, 52 blizzards and other winter weather events, as well as support to other states and territories affected by hurricanes. Notable

instances include 2019 Statewide Flooding; Operation Bush Hog in 1997; Hurricanes Katrina, Ike, Gustav, and Harvey; tornadoes in 1975 in Omaha, 2004 in Hallam, and 2014 in Pilger.



Nebraska Army National Guard Soldiers move to safety after hooking up sandbags to a UH-60 Blackhawk helicopter during sandbagging operations near Genoa, Nebraska, March 23, 2019. Nebraska Army National Guard helicopter and ground crews were conducting sandbag, air drop missions in response to record flooding. Nebraska National Guard photo by Army Staff Sergeant Koan Nissen.



Members of the Nebraska Army National Guard's 24th Medical Company assist stranded citizen circa 1975.



The Nebraska National Guard hay drop operations, April 1, 2019, supporting farmers and ranchers in need near Columbus and Scotia, Nebraska. Using a Ch-47 Chinook helicopter from Company B, 2-135th General Support Aviation Battalion, the Nebraska National Guard Soldiers picked up donated hay bales collected at the Nebraska State Fair Grounds in Grand Island and delivered them to farmers unable to move feed to their livestock after historic flooding damaged infrastructure and limited equipment movement. Nebraska National Guard photo by Spc. Lisa Crawford.

MEDICAL RESPONSES

The NENG has provided medical support 90 times to Nebraska communities including multiple medical evacuations in rural areas. The NENG supported the

Health Department with Small Pox vaccination in 2003 and provided significant COVID-19 responses across the state 2020-2021.



Tech. Sgt. Jonathon Zgainer, (right), aerospace medical technician, 155th Medical Group, gives an initial dose of a COVID-19 vaccine to Maj. Gen. Daryl Bohac, (left), Nebraska adjutant general, Jan. 14, 2021, at the medical detachment of the Nebraska National Guard air base in Lincoln. Bohac said he chose to receive the voluntary vaccination because he wanted to demonstrate to others his confidence in the vaccine and the science behind how it was developed. Nebraska National Guard photo by Sgt. Lisa Crawford.

Staff Sergeant Brad Wardyn, a flight medic with Company G, 2-104th General Support Aviation Battalion, administers a COVID-19 vaccine dose to local civilians, January 21, 2021, in Columbus, Nebraska. As part of a joint effort, Nebraska National Guard Soldiers and Airmen assisted the Department of Health and Human Resources, East Central District Health Department, local volunteer nurses and staff from the City Emergency Management agency with administering vaccines, verifying documents, and completing Center for Disease Control and Prevention (CDC) vaccination cards. U.S. Air National Guard photo by Senior Airman Jamie Titus.



MEDICAL RESPONSES



A Nebraska National Guard Airman speaks with a local citizen before collecting a nasopharyngeal sample at a mobile testing site in Nebraska City, Nebraska. The Nebraska National Guard had multiple teams supporting the Nebraska Department of Health and Human Services with COVID-19 mobile testing across the state. Nebraska National Guard photo by Officer Candidate Heidi McClintock.



A Nebraska National Guard Airman puts on personal protective equipment, June 10, 2020, before collecting a nasopharyngeal sample at a mobile testing site in Nebraska City, Nebraska. The Nebraska National Guard had multiple teams supporting the Nebraska Department of Health and Human Services with COVID-19 mobile testing across the state. Nebraska National Guard photo by Officer Candidate Heidi McClintock.



The 24th Medical Company (Air Ambulance) flew UH-19D "Chickasaws" in 1968-1969 to study the feasibility of evacuating automobile accident victims by helicopter. The two aircraft were purchased with federal Department of Transportation funds and became part of Nebraska's "Sky Aid" research project. This was the forerunner of today's civilian helicopter "life-flight" operations, the Regular Army's Military Assistance to Safety and Traffic (MAST), and the Nebraska National Guard's ongoing neonatal flights.

SECURITY RESPONSES

The NENG has provided security and assistance to law enforcement on 58 separate occasions, in support of law enforcement response to riots and civil disturbances, political disputes, searches for fugitives, border protection operations, security for airports, and security for planned events. Through these efforts the NENG has served the

communities across the state of Nebraska and as a part of national security efforts in response to the 9/11 attacks in 2001, sustained contributions to border protection, and civil unrest in Washington, D.C., during the 2021 Presidential Inauguration.



Soldiers with the Nebraska Army National Guard's 192nd Military Police Detachment and 1057th Military Police Company pose with Omaha Police Department officers for a group photo, June 2, 2020, in downtown Omaha, Nebraska. The Nebraska National Guard was activated to support civil authorities – including the Omaha Police Department – in protecting property and ensuring the safety of Nebraskans participating lawfully in peaceful demonstrations. Nebraska National Guard photo by Sergeant Lisa Crawford.



Nebraska Army National Guard Soldiers provide security at the Kearney Municipal Airport in October 2001 following the September 11, 2001, terrorist attacks. Photo by Lieutenant Colonel Kevin Hymes.



Nebraska National Guard Soldiers with Troop B, 1-134th Cavalry Squadron, look out the front doors of the Nebraska State Capitol, May 31, 2020, in Lincoln, Nebraska. The Nebraska National Guard was activated to support civil authorities in protecting property and ensuring the safety of Nebraskans participating lawfully in peaceful demonstrations. Nebraska National Guard photo by Sgt. Lisa Crawford.

SEARCH AND RESCUE

The NENG has provided search and rescue on 13 occasions, including aviation and train accidents. Notable incidents include: aerial search efforts by Air National Guard (ANG) RF-4 aircraft in response to the famous United Flight 232 accident at the Sioux City airport in July of 1989, the 2019 DUSTOFF rescue of the year award for the rescue of seven firefighters from

the Elkhorn River via a UH-60 Blackhawk helicopter, and the 2021 successful location of five lost mariners in the Pacific Ocean by an ANG KC-135 Stratotanker crew. Of significant note, 112 Nebraska citizens were rescued during the floods of 2019, with 66 of those rescued by helicopter hoist.

With the swimmer secured, a diver from the Nebraska Task Force One begins to ascend back into the UH-60 Blackhawk helicopter. The Soldiers of the 1-376th Aviation, Nebraska National Guard, helped provide aerial support to assist the Hickman Fire District during Operation Titan Fall, a domestic emergency response exercise, October 19, 2019, in Lincoln, Nebraska.

Operation Titan Fall was designed to test and improve emergency procedures and communication between the Nebraska National Guard, Nebraska Emergency Management Agency, and Nebraska Task Force 1, as well as local civil authorities and first responders.



After retrieval by helicopter – both Nebraska Army National Guard UH-60 Blackhawk and UH-72 Lakota helicopters were used for this exercise – the simulated casualties were transported to CHI Health Saint Elizabeth in Lincoln where the hospital staff treated them for their simulated injuries. To add greater pressure for testing the hospital’s capabilities, a dozen Nebraska Air National Guard trainees were also admitted to the hospital simultaneously with the delivery of the water rescue patients. This exercise allowed all agencies involved to practice communicating in a similar manner, which can be especially difficult with verbiage and jargon unique to each agency.



Members of the Nebraska National Guard CERFP conduct a patient extraction exercise at the Mead Training Center near Mead, Nebraska.

FIRE AND HAZMAT RESPONSES

The NENG has responded to 28 wild and urban fire incidents, most notably saving the town of Crawford in 2000. The NENG supported multiple local municipalities, primarily in the western part of state,

with both ground and aerial assets. The Guard has specialized wildland firefighting equipment to include off-road pumpers and aerial water buckets.



A home sits empty after the Fairfield Creek fire burned the surrounding area on July 24, 2012, near Norden, Nebraska. The Nebraska Army National provided support to the fire response by dropping water from helicopters using “bambi buckets.” Photo by Staff Sergeant Heidi McClintock.

HAZARDOUS MATERIALS (HAZMAT) AND CHEMICAL BIOLOGICAL RADIOLICAL NUCLEAR RESPONSES (CBRNE)

The NENG has responded to 64 CBRNE or HAZMAT incidents or planned events as a part of CBRNE mitigation efforts. These have included HAZMAT responses across the state and support to planned events such as Nebraska football games, Olympic Swim Trials, the College World Series, NCAA Women’s Volleyball

matches, Democratic National Convention, NFL Super Bowls, the 2010 British Petroleum (BP) oil spill, train derailments in Nebraska and Iowa, and operational responses to COVID-19 or other unknown hazardous material spills or leaks around the state.



A member of the Nebraska National Guard’s 72nd Civil Support Team conducts training during an exercise in 2015. Photo by Lieutenant Colonel Kevin Hynes.



Members of the 72nd CERFP conduct medical triage of a simulated CBRNE attack victim during a 2018 training exercise in Columbia, Missouri. Photo by Sergeant First Class James Graham.



NATIONAL INCIDENT MANAGEMENT SYSTEM (NIMS)

NEBRASKA

Good Life. Great Strength.

NEBRASKA MILITARY DEPARTMENT

NIMS OVERVIEW

NIMS COMPONENTS

The National Incident Management System (NIMS) guides all levels of government, nongovernmental organizations and the private sector to work together to prevent, protect against, mitigate, respond to and recover from incidents.

NIMS provides stakeholders across the whole community with the shared vocabulary, systems and processes to successfully deliver the capabilities described in the National Preparedness System. NIMS defines operational systems that guide how personnel work together during incidents.

NIMS COMPONENTS:

1. National Qualification System (NQS)

- The NQS establishes standard minimum qualifications for specific incident-related positions to provide consistency across the Nation and support nationwide interoperability. Using the NQS approach to qualify, certify, and credential incident management and support personnel ensures personnel deploying through mutual aid agreements and compacts have the capabilities to perform the duties of their assigned roles.
- FEMA also crafted the NIMS Job Titles/Position Qualifications, accompanying Position Task Books (PTB).

2. Resource Typing

- Resource typing is the categorization and description of resources that are commonly exchanged in disasters via mutual aid, by capacity and/or capability.

3. National Qualification System (NQS)

- *Mutual Aid Agreements* establish the terms under which one party provides resources—personnel, teams, facilities, equipment, and supplies—to another party. Because most jurisdictions do not maintain sufficient resource levels to handle extreme events independently, mutual aid agreements provide a means for jurisdictions to augment their resources when needed for high-demand incidents
- *Emergency Management Assistance Compact* (EMAC) is a congressionally ratified mutual aid compact that defines a non-Federal, state-to-state system for sharing resources across state lines during an emergency or disaster. Signatories include all 50 states, the District of Columbia, Puerto Rico, Guam, and the U.S. Virgin Islands. EMAC's unique relationships with states, regions, territories, and Federal organizations, such as FEMA and the National Guard Bureau, enable it to move a wide variety of resources to meet the jurisdictions' needs.

4. Command and Control Systems

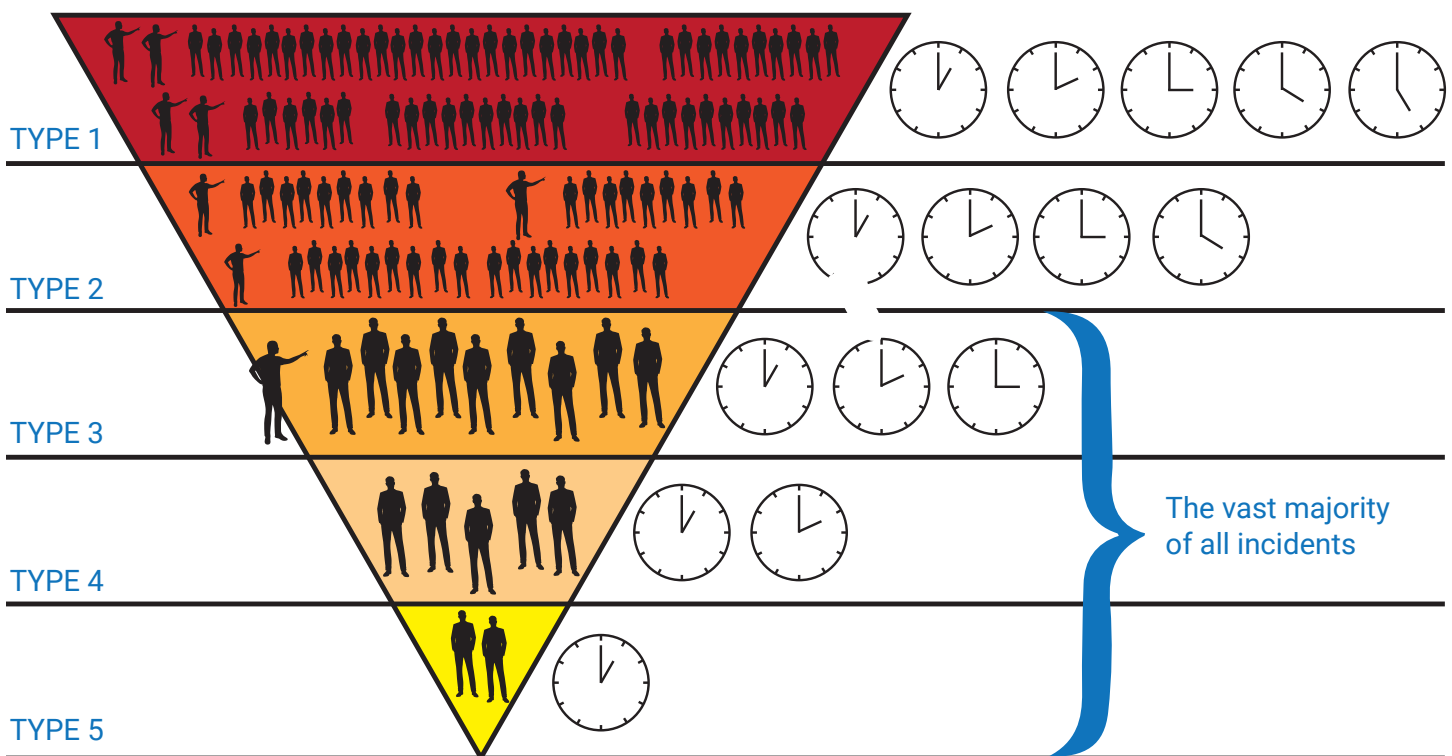
- Incident Command Structures (ICS) and Emergency Operation Centers (EOC) organizational structures develop in a modular fashion based on an incident's size, complexity, and hazard environment. Responsibility for establishing and expanding ICS organizations and EOC teams ultimately rests with the Incident Commander (or Unified Command) and EOC director. Regardless of the size, complexity, or scope of the incident, effective command and coordination—using flexible and standard processes and systems—helps save lives and stabilize the situation. Incident command and coordination consist of four areas of responsibility:
 1. Tactical activities to apply resources on scene;
 2. Incident support, typically conducted at EOCs, through operational and strategic coordination, resource acquisition and information gathering, analysis, and sharing;
 3. Policy guidance and senior-level decision making;
 4. Outreach and communication with the media and public to keep them informed about the incident.



INCIDENT TYPING

Using a common approach and consistent method for determining complexity level will improve the effectiveness and implementation of NIMS and the National Preparedness System. This approach to incident complexity promotes a common understanding among whole community partners—state, local, tribal and territorial (SLTT) and federal government agencies, NGOs, nonprofit organizations and the private sector.

The term complexity level quantifies the level of difficulty or resistance an incident presents to those working to successfully manage or mitigate it. As incidents may vary in their difficulty or resistance to mitigation or management, FEMA measures complexity level on a scale of 5 to 1, where Type 5 is the least complex incident and the least resistant to management or mitigation.



- TYPE 1** Most complex, requiring national resources for safe and effective management and operation. Type 1 response may continue for many weeks or months.
- TYPE 2** Incident extends beyond the capabilities for local control and is expected to go into multiple operational periods. Often requires the activation of response resources from outside the local area.
- TYPE 3** Incident needs exceed onsite capabilities and additional resources from the local area may be brought in to support the response. The response will last longer than one or two operational periods.
- TYPE 4** Minor incidents that can usually be resolved within a day with onsite resources and support from other facility personnel.
- TYPE 5** Small incident that can usually be resolved within a few hours with onsite resources.

RESOURCE MANAGEMENT RESOURCE TYPING LIBRARY TOOL

Resource typing is defining and categorizing incident resources by capability. Resource typing definitions establish a common language for discussing resources by defining minimum capabilities for personnel, teams, facilities, equipment, and supplies. Resource typing enables communities to plan for, request, and have confidence that the resources they receive have the capabilities they requested. When identifying which resources to type at the national level, FEMA selects resources that:

- Can be shared and/or deployed across jurisdictional boundaries through mutual aid agreements or compacts.
- Can be identified by the following characteristics:
 1. **Capability:** The core capability for which the resource is most useful.
 2. **Category:** The function for which a resource would be most useful (e.g., firefighting, law enforcement, health and medical).
 3. **Kind:** A broad characterization (i.e personnel, teams, facilities, equipment and supplies).
 4. **Type:** A resource's level of minimum capability to perform its function.

The specific metrics used for determining a resource's type depends on the kind of resource and the mission envisioned (e.g., a mobile kitchen unit is typed according to the number of meals it can produce, while dump trucks are typed according to haul capacity); Type 1 is a higher capability than Type 2, which is higher capability than Type 3, etc.

The **Resource Typing Library Tool** (RTLTL) is an online catalog of NIMS resource typing definitions and job titles/position qualifications. From the RTLTL home page, users can search by resource type, discipline, core capability, or other key words. <http://www.fema.gov/resource-managementmutual-aid>

COMPONENT	TYPE 1	TYPE 2	TYPE 3	TYPE 4	NOTES
MINIMUM PERSONNEL PER TEAM	5	4	Same as Type 4	3	Not Specified
MANAGEMENT AND OVERSIGHT PERSONNEL PER TEAM	Same as Type 2	Same as Type 3	Same as Type 4	Same as Type 5	Pilots should have training for NVG use and have a rating to operate in IFR conditions.
SUPPORT PERSONNEL PER TEAM	Same as Type 2, PLUS: 1. NIMS Type 1 Emergency Medical Technician (EMT).	Same as Type 3, PLUS: 1. NIMS Type 1 Helicopter SAR Crew Chief.	Same as Type 4	Same as Type 5, PLUS: 1. NIMS Type 1 Helicopter SAR Technician.	1. Crew Chief and Technician should have training for NVG operations. 2. Flight Observer is not a NIMS typed support position and the requestor should acquire locally. The position is not a part of the crew and does not deploy with the aircraft.
FUNCTIONS CAPABILITY PER TEAM	Same as Type 2, PLUS: 1. Multi-engine. 2. Capability to provide medical attention for at least two persons being transported.	Same as Type 3, PLUS: 1. Night Operations. 2. IFR capable. 3. NVG capable.	Same as Type 4	Same as Type 5, PLUS: 1. Rescue capability. 2. Ability to transport at least two persons, one of which can be in a litter.	Only crew members with certification in accordance with Authority Having Jurisdiction (AHJ) requirements may administer medical care, including BLS.
OPERATIONS EQUIPMENT PER TEAM	Same as Type 2	Same as Type 3, PLUS: 1. NVG. 2. IFR equipment.	Same as Type 4, PLUS: Access, rescue, and recovery equipment, including: 1. Air rescue litter. 2. Straps. 3. Baskets. 4. Human cargo hoist. 5. Dual external hooks or hook and harness / backup. 6. BLS level care and equipment.	Same as Type 5, PLUS: 1. Human cargo dual external hooks or hook and harness / backup. 2. One litter or ability to carry one person flat.	Recommend for daylight search only unless the aircraft is equipped with a thermal imager, search light, or NVG certified / capable aircraft for night searches.
COMMUNICATIONS EQUIPMENT PER TEAM	Same as Type 2, PLUS: 1. Dual VHF aviation radios.	Same as Type 3	Same as Type 4	Same as Type 5	1. Intra-team and inter-team communications should be consistent with National Interoperability Field Operations Guide (NIFOG). 2. Consider alternate forms of communication, such as satellite phones, based on the mission assignment and team needs.

COMMUNITY LIFELINES

Lifelines are the most fundamental services in the community that, when stabilized, enable all other aspects of society. They enable the continuous operation of critical government and business functions and are essential to human health and safety or economic security. When disrupted, decisive intervention (e.g. rapid service re-establishment or employment of contingency response solutions) is required.

National Response Framework (NRF) 4th Edition (October 2019) formalized lifelines into national response policy. Emergency Support Functions (ESFs) deliver core capabilities to stabilize community lifelines for an effective response. Nebraska National Guard is the State's Emergency Support Function #15 – Military Support. Lifelines in dark blue highlight what we can support during a disaster.

 Safety and Security	 Food, Water, Shelter	 Health and Medical	 Energy (Power & Fuel)	 Communications	 Transportation	 Hazardous Materials	 Water Systems
 Law Enforcement / Security	 Food	 Medical Care	 Power (Grid)	 Infrastructure	 Highway / Roadway	 Facilities	 Potable Water Infrastructure
 Fire Services	 Water	 Patient Movement	 Fuel	 Alerts, Warnings, and Messages	 Mass Transit	 HAZMAT Pullutants, Contaminants	 Wastewater Management
 SAR Search and Rescue	 Shelter	 Public Health		 911 and Dispatch	 Railway		
 Government Services	 Agriculture	 Fatality Management		 Responder Communications	 Aviation		
 Community Safety		 Medical Supply Chain		 Finance	 Maritime		

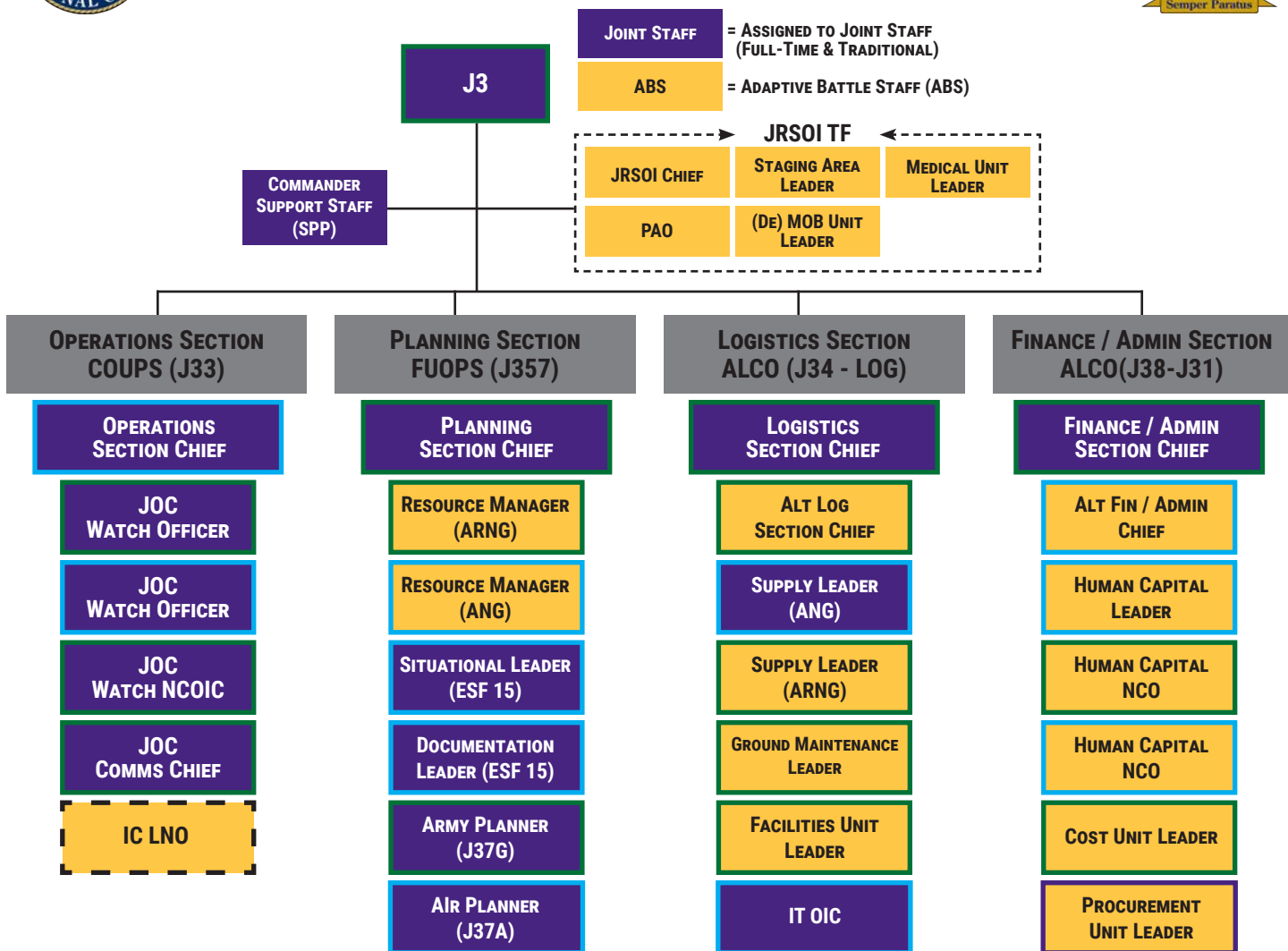
NENG DOMESTIC OPERATIONS COMMAND AND CONTROL STRUCTURE

The Incident Command System (ICS) is a management system designed to enable effective and efficient domestic incident management by integrating a combination of facilities, equipment, personnel, procedures, and communications operating within a common organizational structure. It enables incident managers to identify the key concerns associated with the incident - often under urgent conditions - without sacrificing attention to any component of the command system.

The Nebraska Domestic Operations (J3) has aligned its staff to the NIMS National Qualification standards and Command and Control organizational structures for both its Joint Task Forces (JTF) and Joint Operation Center (JOC). The Joint Staff is permanent emergent response members for all activations. During a State response the Adaptive Battle Staff will be activated as needed to support the specific incident, designed to be scalable and flexible as needed.



NG INCIDENT COMMAND STRUCTURE





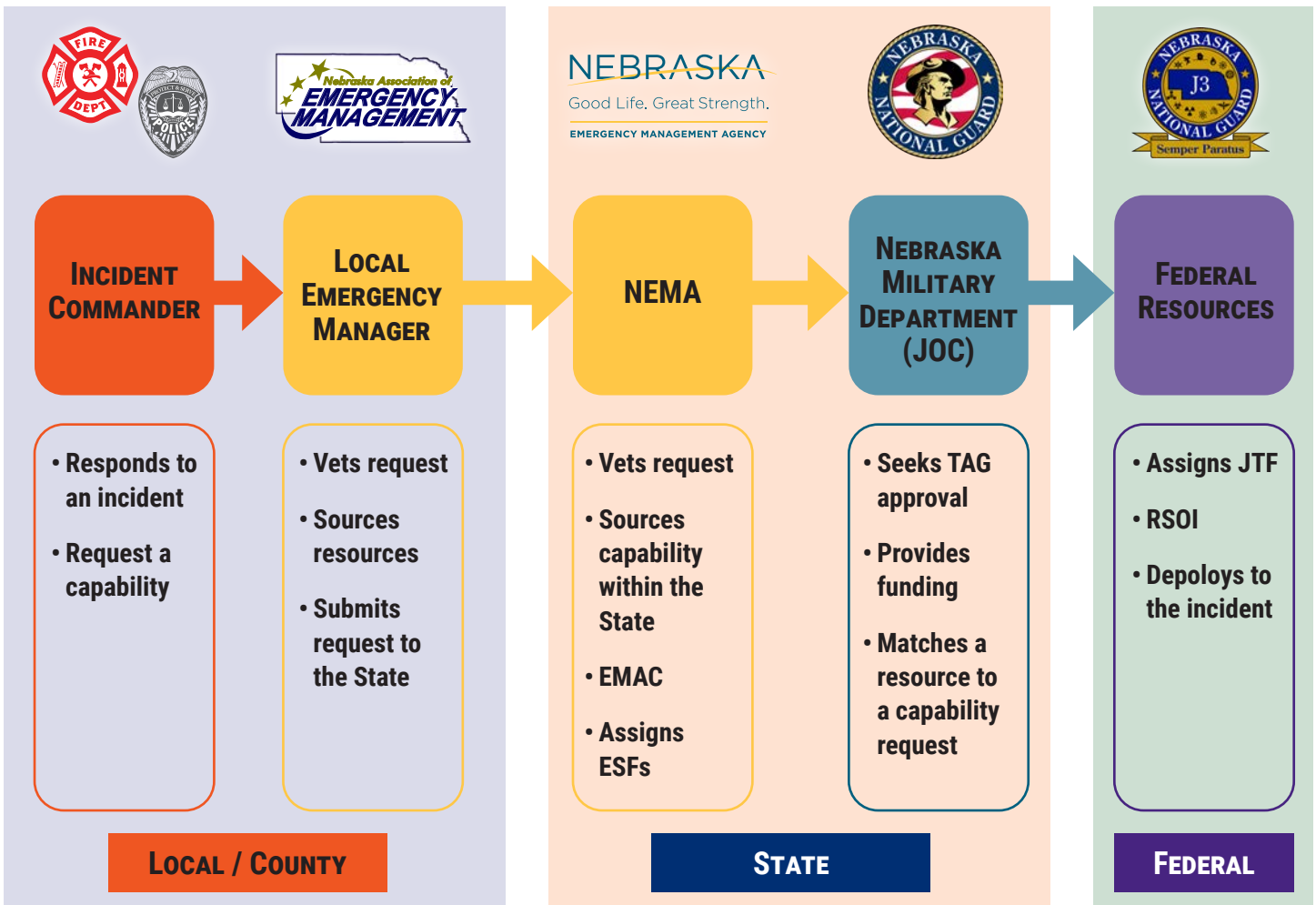
MILITARY REQUEST PROCESS

To request Nebraska National Guard Support for domestic operations, contact the Nebraska Emergency Managements Agency's (NEMA) main number at 402-471-7421, the Duty Officer at 402-499-1219, or the backup Duty Officer at 402-499-1227.

When a local jurisdiction does not have the resources it needs to respond to a disaster, it turns to the State government for assistance. The State government may have many local jurisdictions requesting aid at the same time. State governments serve as agents for the local jurisdictions if Federal disaster assistance is needed. Local governments cannot directly access Federal programs.

All request for Capabilities / Resources should come on an ICS Form 213, General Message and must be approved by NEMA before the Guard can deploy.

Questions specifically about Guard capabilities: ng.ne.nearng.list.j3-joc@army.mil





NEBRASKA

Good Life. Great Strength.

NEBRASKA MILITARY DEPARTMENT



COST TABLE ABBREVIATIONS & ACRONYMS

NEBRASKA

Good Life. Great Strength.

NEBRASKA MILITARY DEPARTMENT

COST FACTORS

EQUIPMENT CATEGORY	TYPE	COST	SCHEDULE
Aircraft	C12	\$2,369.00	per hour used
	KC-135	\$11,651.00	
Ambulances	M997 HMMWV	\$30.40	per day used
All-Terrain Vehicles	Commercial ATVs	\$5.00	per day used
Cargo Trailers	Semitrailer van: cargo	\$1.28	per day used
	Trailer, cargo		
	Trailer, cargo ¾-1 ¼ T Trailer, cargo flatbed LMTV		
Cargo Trucks	Truck, cargo ¾ T	\$27.09	per day used
	Truck, Van: cargo 4 – 4 ½ T		
	Truck, Van LMTV		
Engineer Equipment	Truck, Dump	\$11.80	per day used
Field Kitchen	Trailer Mounted	\$50.00	per day used
Firefighting Equipment	Truck, Fire Fighting	\$3.95	per mile used
	Trailer, Fire Fighting	\$3.95	
Forklifts	Forklift, Rough Terrain	\$18.08	per day used
	Truck, Forklift 6,000 lb RT	\$12.85	
	Truck, Forklift 10K RF-TR	\$16.35	
Fuel Assets	Semitrailer, Tank Fuel 5,000 gallon	\$5.35	per mile used
	Tank and Pump Unit, 500 gallon		
	Tank, Liquid dispensing 500 gallon		
	Truck, Tank Fuel 2,500 gallon		
Generators	Generator 2kw – 5kw	\$4.50	per day used
	Generator 10kw	\$5.66	per day used
	Generator 15kw	\$12.64	per hour used
	Generator 30 kw	\$13.37	per day used
	Generator 60 kw	\$17.06	per day used
GSA/Non-Tactical Vehicles	Bus 28-44 passenger	\$0.55 / \$16.63	per mile / per day
	Truck, Cargo Pickup	\$0.23 / \$9.54	
	Van, 12-16 passenger	\$0.23 / \$9.54	
Helicopters	CH-47F	\$6,660.00	flight hour
	UH-60A	\$7,294.00	flight hour
	UH-60L	\$5,855.00	flight hour
	UH-72A	\$2,680.00	flight hour
HMMWV	All Variants	\$40.10	per day used
Recovery Vehicle	Medium M88	\$379.73	per mile used
Semi-Trailers	All Variants	\$34.56	per day used
Truck, Troop Transport/Cargo	2 ½ T Variants	\$34.56	per day used
	5 T Variants	\$34.56	per day used
Truck, Semi-Tractors	All Variants	\$10.24	per mile used
Truck, Wrecker	All Variants	\$43.55	per day used
Water Assets	Water Purification Systems	\$37.27	per day used

As of April 2021

- Subject to change based on National Guard Bureau guidance.
- If no cost factor is associated with equipment, no cost is applied to use except for replacement or repair costs if equipment is lost, damaged, or destroyed.



ABBREVIATIONS AND ACRONYMS

AASF	Army Aviation Support Facility
ADVON	Advance Echelon (Advance party)
ALS	Advanced Life Support
ANG	(Nebraska) Air National Guard
CBRNE	Chemical, Biological, Radiological, Nuclear, Explosives
CH-47	Cargo Helicopter
CST	Civil Support Team
DCO-E	Defense Cyber Operations – Element
DECON	Decontamination (Hazard Material)
DOMOPS	Domestic Operations (Emergency Management)
DRASH	Deployable Rapid Assembly Shelter
DSK	Dismounted Strike Kit
ECU	Environmental Control Unit
FE	Flight Engineer
FEMA	Federal Emergency Management Agency
FLIR	Forward Looking InfraRed
ICP	Incident Command Post
ICS	Incident Command Structure
JRSOI	Joint Reception, Staging & Onward Integration
LIDS	Lightweight Inflatable Decontamination System
MOC	Mobile Operations Center
MRP	Mission Ready Pacakage
NENG	Nebraska National Guard
NGRF	National Guard Reaction Force
NGSW	National Guard Severe Weather
NGWF	National Guard Wildland Firefighting
NIMS	National Incident Management System
NRCM	Non-rated Crewmember
PI	Pilot
PIC	Pilot in Command
UCS	Unified Command Suite
UH-60	Utility Helicopter



NEBRASKA

Good Life. Great Strength.

NEBRASKA MILITARY DEPARTMENT



NEBRASKA NATIONAL GUARD DOMESTIC OPERATIONS TASK FORCES

NEBRASKA

Good Life. Great Strength.

NEBRASKA MILITARY DEPARTMENT

AVIATION TASK FORCE

AVIATION

1

4

8

9



AVIATION MISSION STATEMENT

Provide aerial support to incident response including search and rescue, wildland firefighting, medical evacuation, transport and other logistical support.

CAPABILITIES



SEARCH & RESCUE

- FEMA Helicopter/Rotary Wing Search and Rescue Team Type 1(-)
- FEMA Law Enforcement Aviation - Helicopters - Patrol & Surveillance Type 1
- Search and Rescue Operations
- Extraction



PATIENT MOVEMENT

- FEMA Helicopter – Firefighting and Rescue Type 1
- Ambulatory and Litter Patient Movement



AVIATION

- Commercial Air Transport (scheduled and emergent)
- Air Cargo Services
- Aerial Work - specialized services such as photography, surveying, observation and patrol.
- Max platform lift capacity: 30 passenger / 15,000 lbs



AVIATION TASK FORCE



PERSONNEL

Minimum crew requirements + Ground support

- Ground Support (Mechanic & Fuelers): 3
- Chinook (PIC, PI, FE): 3
- Blackhawk (PIC, PI, FE, Medic): 3-4
- Lakota (PIC, PI, NRCM): 3

EQUIPMENT

Is mission dependent. Airframes can be configured with variety of specialized items:

- Hoist
- External loads (Water bucket and sandbag operations)
- FLIR Full Motion Camera
- Statewide Radio System (Civil band frequencies)
- Advanced (ALS) Medical equipment

SPECIAL INSTRUCTION

Aircraft departing from and returning to the Army Aviation Support Facility (AASF), *with flight time of less than 8 hours*, will not require additional logistical resourcing. Missions away from home station, with long duty days, will require significant logistical resourcing of transportation, lodging, and meals.

ACTIVATION TIME

Next Operational Period - Day after notification.
Quicker response times are on a case-by-case basis.

COST ESTIMATE

FY23 Aviation Reimbursable Rates (*Per Flight Hour*)

STATE ACTIVE DUTY	NON-EMERGENCY	EMERGENCY
CH-47F	\$7,477	\$7,178
UH-60L	\$7,247	\$6,959
LUH-72	\$1,907	\$1,828
C-12	\$2,889	\$2,771



AVIATION



CIVIL SUPPORT TEAM (CST) TASK FORCE

CIVIL SUPPORT TEAM

2

8

10

13



CST MISSION STATEMENT

On order, the 72nd CST provides support to civil authorities at a domestic CBRNE site by identifying CBRNE agents and substances, assessing current and projected consequences, advising on response measures, and assisting with appropriate requests for additional support in response to natural and man-made disasters. This includes natural and man-made disaster response.

CAPABILITIES



HAZARDOUS MATERIALS

- FEMA Hazardous Materials Response Team Type I
- Mobile Communications Center Type 3
- Support civil authorities at a domestic incident site for an **Unknown Hazardous Material Response** which includes intentional and unintentional release of toxic chemicals, biological agents, radiological isotopes, nuclear material, or explosives (CBRNE).
- Conduct on-scene analysis and provide presumptive results
- Provide downwind hazard modeling and evacuation recommendation.
- Assist with hazardous material mitigation and remediation solutions.



COMMUNICATIONS

- Mobile Communications Unit (Law/Fire) Type I
- Provide on-scene interoperability communications support to the incident in form of radios, internet, and video feeds.



MEDICAL

- FEMA Public Health and Medical Systems Assessment Team (-)
- Advise and assist concerning hazardous materials effects and medical treatment for casualties, incident team members, and the general population.
- Advise concerning long term health and environmental impacts of affected community.



COMMUNITY SAFETY

- Support Civil authorities with environmental monitoring during large events. Using specialized CBRN sensors and area arrays can do passive and active monitoring of chemical releases. The full-time team of Soldiers and Airmen are trained and equipped to respond to emergencies or terrorist events involving weapons of mass destruction, toxic industrial chemicals, or natural disasters.

CIVIL SUPPORT TEAM (CST) TASK FORCE



PERSONNEL

- 22 personnel team
- Continuous operations for a maximum of 72 hours self-sustained

SPECIAL INSTRUCTION

Available 24 hours a day, 7 days a week for rapid deployment.

COST ESTIMATE

Federally resourced, trained, and sustained.

EQUIPMENT

- Command: Advanced Communications Vehicle (Type 2)
- Operations: Tactical Operations Center Trailer (Type 3)
- Administration/Logistics: Decontamination Trailer
- Medical/Analytical: Ambulance and Mobile Analytical Laboratory System
- Communications: Unified Command Suite (Type 1)
- Survey: Hazardous Materials Trailer

ACTIVATION TIME

Advance team deploys within 90 minutes; the main body within three hours.



CIVIL SUPPORT TEAM

CHEMICAL / BIOLOGICAL / RADIOLOGICAL / NUCLEAR AND HIGH-YIELD EXPLOSIVE (CBRNE) ENHANCED RESPONSE FORCE PACKAGE (CERFP) TASK FORCE

CERFP

2

8

9

10

13



CERFP MISSION STATEMENT

Upon consent of the Governor during major or catastrophic CBRN incidents, man-made or natural disasters, the CERFP alerts, recalls, and deploys critical command and control and life-saving capabilities within six hours; on order, deploys and conducts command and control, search and extraction, mass casualty decontamination, and medical stabilization in order to save lives and mitigate human suffering.

CAPABILITIES



COMMAND AND CONTROL

- Conduct planning and coordination of a CBRNE disaster
- Provides Liaison Officer to Incident Commander or appropriate ICS branch / division



SEARCH AND EXTRACTION (IN CBRNE ENVIRONMENT)

- Rescue Operations
- Stabilization of Damaged Structures
- Confined Space



DECONTAMINATION

- Mass Casualty Decontamination
- Personal Decontamination (DECON) and Hazardous Waste Collection
- Technical Decontamination



MEDICAL

- Provide mass casualty triage and life-saving medical stabilization.
- Coordinate transportation to higher level of care.



FATALITY SEARCH AND RECOVERY TEAM

- FEMA Fatality Management Human Remains Recovery Team Type I(-)
- Collection, catalog, and hold human remains pending Medical Examiner / Coroner taking custody.
- Conduct search and recovery operations for human remains in a contaminated area.



JOINT INCIDENT SITE COMMUNICATIONS

- Mobile Communications Unit (Law/ Fire) Type I.
- Provides satellite IP connectivity and RF network interoperability.
- OGA interoperability.
- 1.2 M Fly-Away antenna, a complement of VHF/UHF/800 Mhz/ HF radios with connectivity software, IP phones, IT equipment, laptops, and accessories including video teleconferencing.



CHEMICAL / BIOLOGICAL / RADIOLOGICAL / NUCLEAR AND HIGH-YIELD EXPLOSIVE (CBRNE) ENHANCED RESPONSE FORCE PACKAGE (CERFP) TASK FORCE



PERSONNEL

- Command Section -19 Personnel (NEARNG)
- Search and Extraction Section 50 Personnel (NEARNG)
- Decontamination Section - 75 Personnel (NEARNG)
- Medical Treatment Section - 47 Personnel (NEANG)
- Fatality Search & Recovery Section- 11 Personnel (IAANG)
- Joint Incident Site Communications Capability- 6 Personnel (NEANG)

SPECIAL INSTRUCTION

CERFP assets are modular sections that may be requested based on need. Request for CERFP assistance should be routed through local Emergency Manager to NEMA.

ACTIVATION TIME

Upon notice ADVON departs within 3 hours. Main body departs within 6 hour.

EQUIPMENT

Equipment (Section Dependent)

- 3 x: Per Person - Level B Hazmat Suit PPE
- 16 x: Pickup Trucks with Cargo Trailers
- 5 x: Pickup Trucks with Climate Controlled Trailers
- 1 x: Pickup Truck with Command and Control Trailer
- 1 x: Pickup Truck with Decon Trailer
- 2 x: Pickup Trucks with Flatbed Trailers
- 1 x: Passenger Van
- 2 x: Bus
- 6 x: Tents (4 Medical, 1 GP, 1 CC)
- 14 x: Generators Assorted Site Setup Supplies (Lights, Megaphones, Cots, Power Distribution System)
- 4 x: ATV
- 1 x: HEMTT with trailer
- 1 x: LMTV
- 1x: LMTV with trailer
- 1 x: HMMWV with trailer
- 1: forklift

COST ESTIMATE

SECTION	PERSONNEL #	COST PER DAY + TRAVEL
COMMAND	19 (NEARNG)	\$3,800
SEARCH AND EXTRACTION	50 (NEARNG)	\$10,000
DECONTAMINATION	75 (NEARNG)	\$15,000
MEDICAL TREATMENT	47 (NEANG)	\$9,400
FATALITY SEARCH AND RECOVERY	11 (IAANG)	\$2,200
JOINT INCIDENT SITE COMMUNICATIONS CAPABILITY	6 (NEANG)	\$1,200
FULL CERFP		\$41,600

CERFP



NATIONAL GUARD REACTION FORCE (NGRF) TASK FORCE

REACTION FORCE

1

2

3

4

5

6

7

8

9

10

11

12

13

14

15



NGRF MISSION STATEMENT

On order, the NGRF provides scalable support to the security needs of civil authorities and other military task forces, using a rapid reaction force, a larger follow-on force, and a just-in-time trained reinforcing capability. The NGRF can provide presence or show of force patrols, roadblocks, check points, and traffic control measures as required by civil authorities in a response to civil disturbances and as a force protection and security for military and civilian responders.

CAPABILITIES



PROVIDE SECURITY SERVICES

FEMA Type 2 Mobile Field Force

FEMA Type 4(+) Patrol Teams

- Manage Public Safety and Security support assets
- Provide Facility Security
- Provide Point/Site Security
- Provide Area Security Support

• Provide Emergency Responder Protection

• Provide Quick Reaction Support

• Provide Transportation Security Operations

• Provide Public Safety Support

• Provide Crowd Management and Control Support



NATIONAL GUARD REACTION FORCE (NGRF) TASK FORCE



PERSONNEL

5 x Teams (30 personnel each) =
Total 150 Military Police / Security Forces personnel

SPECIAL INSTRUCTION

- NGRF does not deploy with a qualified NIMS type 1 Patrol Leader, however, will deploy with organic military command and control.
- NGRF must be deputized by the state prior to peace office authority application of law.
- NGRF will require lodging and meals at the incident staging/basing location.

EQUIPMENT

- L3 Harris Programmable Handheld Radios
- Non-Ballistic Shields and Associated Riot Control Equipment
- Standard LE PPE
- Small Arms Weapons (if requested & applicable)

ACTIVATION TIME

NGRF is not a full-time organized element and must be activated, requiring 24-72 hours to organize and deploy.

COST ESTIMATE

14-day (30 personnel team) deployment estimate =
\$92,000 (includes personnel and associated equipment).



REACTION FORCE



DEFENSE CYBER OPERATIONS-ELEMENT (DCO-E) TASK FORCE

DCO-E

3



DCO-E MISSION STATEMENT

On order, the DCO-E provides cyber security advisors to state, local, tribal, territorial governments, and any other civilian partner requiring assistance. The DCO-E can assist with network security assessment, aid in defensive cyber operations specific to an event or period of non-disruption or provide incident advisors to a suspected or known network compromise.

CAPABILITIES



CYBER DEFENSE SUPPORT TO CRITICAL INFRASTRUCTURE

Incident Response

- Conduct defensive cyberspace operations
- Protect network, information systems, and data

Incident Management

- Develop cyberspace situational awareness
- Provide threat analysis and response courses of actions

Assessment / Audit

- Conduct vulnerability and infrastructure assessments
- Provide education and cross training



CYBER DEFENSE SUPPORT TO GOVERNMENT SERVICES

Incident Response

- Conduct defensive cyberspace operations
- Protect network, information systems, and data

Incident Management

- Develop cyberspace situational awareness
- Provide threat analysis and response courses of actions

Assessment / Audit

- Conduct vulnerability and infrastructure assessments
- Provide education and cross training



DEFENSE CYBER OPERATIONS-ELEMENT (DCO-E) TASK FORCE



PERSONNEL

Incident Response: 10 Pax

- Team Chief
- Deputy Team Chief
- Sr. Information Services Technician
- Sr. Information Systems Technology Specialist
- Information Protection Technician
- Intelligence Analyst
- Information Systems Technology Specialist (x4)

Incident Management: 4 Pax

- Team Chief
- Sr. Information Services Technician
- Sr. Information Systems Technology Specialist
- Intelligence Analyst

Assessment / Audit: 4 Pax

- Deputy Team Chief
- Sr. Information Services Technician
- Sr. Information Systems Technology Specialist
- Information Protection Technician

SPECIAL INSTRUCTION

The following should be considered when requesting DCOE support:

- Network / system privileges
- Memorandums of agreement / understanding
- Non-disclosure agreements
- Legal limitations of National Guard assets on Mission Partner networks

The following products will be required upon DCOE activation:

- Network Diagrams
- Hardware/Software Asset Lists
- Mission Partner Liaison

EQUIPMENT

Incident Response

- CFAK or DDS-M Kit
- Laptops (x10)
- Printer
- 15 Pax van

Incident Management

- CFAK
- Laptops (x4)
- Printer
- Sedan

Assessment / Audit

- CFAK
- Laptops (x4)
- Printer
- Sedan

ACTIVATION TIME

- O/O Title 32 or State Active Duty
- 24 - 72 hours to organize and deploy

COST ESTIMATE

- Incident Response ~ \$6,000 per day
- Incident Management ~ \$1,700 per day
- Assessment / Audit ~ \$1,700 per day

DCO-E

NATIONAL GUARD JOINT EMERGENCY RESPONSE CREW (NG-JERC) TASK FORCE

JOINT EMERGENCY RESPONSE CREW

4

8

9



NG-JERC MISSION STATEMENT

On order, the NG-JERC provides scalable support to civil authorities during wildland fire and wildland-urban interface fire incidents by providing National Wildfire Coordinating Group NG-JERC qualified hand crews, ground firefighting assets, and firefighting assets for ground or aerial fire suppression and emergency aeromedical evacuation.

CAPABILITIES



PROVIDE WILDLAND FIRE SUPPRESSION OPERATIONS

FEMA Type 3 Wildland Fire Hand Crew (NG-JERC - Joint Emergency Response Crew) and helicopter aerial fire suppression via Bambi Bucket operations.

- Ground Fire Suppression
- Aerial Fire Suppression Operations including reconnaissance and water drop



PROVIDE MEDICAL EMERGENCY RESPONSE AND PATIENT MOVEMENT OPERATIONS

Helicopter aerial patient movement capability to facilitate rapid ambulatory and litter patient movement to medical facilities.

- Aeromedical Evacuation



NATIONAL GUARD JOINT EMERGENCY RESPONSE CREW (NG-JERC) TASK FORCE



SPECIAL INSTRUCTION

NG-JERC will require lodging and meals at the incident staging/basing location.

COST ESTIMATE

Aerial Fire Suppression and/or medical patient movement support (see Aviation Task Force Cost).

Hand Crew 14-day (20 personnel team) deployment estimate = \$62,000 (includes personnel and associated equipment)

EQUIPMENT

This is determined based on request, need, and requirements.

ACTIVATION TIME

NG-JERC is not a full-time organized element and must be activated. Aerial helicopter fire suppression and/or medical patient movement support activation estimate will take 12-24 hours from time of notification. Hand Crew activation will take 24-48 hours from time of notification to organize and deploy.

JOINT EMERGENCY RESPONSE CREW



NATIONAL GUARD SEVERE WEATHER (NGSW) TASK FORCE

SEVERE WEATHER

1

6

7

9

12

13

14



NGSW MISSION STATEMENT

On Order, the NGSW Task Force provides scalable support to civil authorities during incidents of severe weather, provide damage mitigation efforts, damage assessments, evacuation for civilians and animals, route clearance, shelter and logistic support for displaced people, and search and rescue in response to tornados, floods, winter storms, severe thunderstorms, and all other instances of severe weather.

CAPABILITIES



FOOD, WATER, SHELTER

Temporary shelter and logistics support for displaced civilians.



DAMAGE ASSESSMENT / CONTROL / CLEANUP

- Ground and Aerial Damage Assessments
- Route Clearance
- Damage Mitigation Assistance (Ice Dusting)



URBAN SEARCH AND RESCUE

Provides specialized personnel to conduct search and rescue operations within an urban environment.



GROUND AND AERIAL EVACUATION

Provide large capable vehicles for mass evacuation needs or provide rapid aerial extraction and evacuation for isolated civilians.



LOGISTIC SUPPORT

Provide trained personnel and support facilities to facilitate large scale logistic needs (i.e., warehousing, storage, distribution centers, etc.).



NATIONAL GUARD SEVERE WEATHER (NGSW) TASK FORCE



PERSONNEL

Will be determined at the time of request.

SPECIAL INSTRUCTION

NGSW will require lodging and meals at the incident staging/basing location.

COST ESTIMATE

Will be determined at the time of request based on need.

EQUIPMENT

Based on request and need.

ACTIVATION TIME

NGSW is not a full-time organized element and must be activated. Based on request and need, activation can take 24 – 96 hours to organize and deploy.



SEVERE WEATHER

JOINT RECEPTION, STAGING AND ONWARD INTEGRATION (JRSOI) TASK FORCE

JRSOI

2

7



JRSOI MISSION STATEMENT

The Nebraska National Guard maintains a trained and resourced JRSOI Task Force that can provide scalable support to civil authorities by receiving and staging personnel, supplies and equipment, and providing temporary bed down, life support, medical support, vehicle maintenance support, and logistical support at fixed and/or mobile sites. This task force integrates responding civilian and military forces into a combined emergency response effort. The JRSOI Task Force can also assist with the demobilization process during recovery efforts.

CAPABILITIES



JOINT RECEPTION STAGING, AND ONWARD INTEGRATION

JRSOI is structured to ensure all response forces entering the incident site are accounted for, supplied, and are provided the appropriate briefings prior to engaging in tactical operations directed by the incident commander. JRSOI also ensures demobilization is managed in an effective and orderly manner ensuring cost, injuries, and incident data are captured prior to releasing the response forces back to the resourcing entity.

- Reception and personnel accountability.
- Staging (housing, life support, feeding, medical).
- Supplies and Equipment (incident PPE).
- Maintenance and Equipment accountability and condition.



JOINT RECEPTION, STAGING AND ONWARD INTEGRATION (JRSOI) TASK FORCE



Food, Water, Shelter



Health and Medical



Energy (Power & Fuel)



Communications



Transportation



Hazardous Materials

PERSONNEL

Initial JRSOI team consist of 10 core personnel that can scale up depending on request, need, and level of incident. JRSOI task force can ultimately scale to a large team consisting of 70-80 personnel in order to accomplish its assigned support to civil authorities.

SPECIAL INSTRUCTION

JRSOI element will require integration with civilian emergency management to ensure both military and civilian requirements and needs are meet prior to onward movement of response forces.

EQUIPMENT

Based on request and need.

ACTIVATION TIME

JRSOI is not a full-time organized element and must be activated. Based on the request, need, and level of incident, activation can take 24 – 96 hours to organize and deploy.

COST ESTIMATE

Will be determined at the time of request based on need.

JRSOI



NEBRASKA

Good Life. Great Strength.

NEBRASKA MILITARY DEPARTMENT



NEBRASKA NATIONAL GUARD MISSION READY PACKAGES (MRP) AND STRIKE FORCE TEAMS

NEBRASKA

Good Life. Great Strength.

NEBRASKA MILITARY DEPARTMENT

CST TYPE 1 HAZMAT ENTRY TEAM

4

MISSION STATEMENT

5

To support civil authorities at a domestic Chemical, Biological, Radiological and Nuclear high-yield Explosives (CBRNE) incident site by identifying UNKNOWN agents/substances, assessing current or projected consequences, advising on response measures, and assisting with appropriate requests for additional follow-on state and federal military forces. Units can also provide immediate response for intentional and unintentional CBRN or hazardous material (HAZMAT) releases and natural or manmade disasters that result in, or could result in, catastrophic loss of life or property.

8

10

13

CAPABILITIES



HAZMAT RESPONSE TEAM

Hazmat Technicians equipped with civilian vehicle, operation trailer, and highly specialized military and commercial HazMat detection and analytical equipment. Primary role is identifying chemical (TIC) and weapons of mass destruction (WMD) in accidental, criminal, or terroristic situations for public safety. Mobile equipment can easily be taken into response area and used to detect and identify vast array of chemicals, biological agents, radiological isotope and explosives substances.

PERSONNEL

8 person team.

EQUIPMENT

- Operations Trailer
- Gas Chromatography
- Mass Spectrometry Devices
- Perimeter Air Monitoring
- Civilian and Military Detectors

ACTIVATION

90 mins activation time + travel to incident

COST ESTIMATE

Federal Funded team.

SPECIAL INSTRUCTION

Self-sustaining for 72 hours response.



CST MOBILE ANALYTICAL LABORATORY SYSTEM (ALS)

4

MISSION STATEMENT

5

To support civil authorities at a domestic Chemical, Biological, Radiological and Nuclear high-yield Explosives (CBRNE) incident site by identifying UNKNOWN agents/substances, assessing current or projected consequences, advising on response measures, and assisting with appropriate requests for additional follow-on state and federal military forces. Units can also provide immediate response for intentional and unintentional CBRN or hazardous material (HAZMAT) releases and natural or manmade disasters that result in, or could result in, catastrophic loss of life or property.

8

10

13

CAPABILITIES

15



UNKNOWN AGENT IDENTIFICATION

The Analytical Laboratory Suite (ALS) provides a science-based analysis of CBRNE samples to gain and maintain an understanding of the contaminated environment. Standardized procedures are followed to support informed decisions by the local incident commander and state and federal agencies that provide follow-on response to a CBRNE incident. Within the compartments of the ALS operators have the ability to prepare, extract, analyze, and store environmental samples and to document environmental conditions. They may also prepare samples for law enforcement in the event of a criminal or terrorist incident.

PERSONNEL

2 person team.

SPECIAL INSTRUCTION

Self-sustaining for 72 hours response.



EQUIPMENT

- Gas Chromatography/Mass Spectroscopy
- Infrared Spectroscopy
- Polarized Light Microscopy
- Polymerase Chain Reaction
- Electrochemical Luminescence
- Immunoassay Detector Tickets
- High Purity Germanium Gamma Spectroscopy
- Fluorescence Microscopy

ACTIVATION

90 mins activation time + travel to incident

COST ESTIMATE

Federal Funded team.



ROUTE OR DEBRIS CLEARANCE TEAM

3

MISSION STATEMENT

9

Nebraska National Guard maintains trained personnel and capabilities to provide All-Hazards debris clearing support resources in order to provide civil authorities with additional surge capacity during emergency response operations to protect life and property and to preserve peace, order, and public safety.

13

14

CAPABILITIES



Support initial clearance of roadways, highways, and airfields after various natural disasters or inclement weather events including downed trees, and flood debris.

PERSONNEL

Two (2) CDL Licensed Drivers

SPECIAL INSTRUCTION

Fuel will need to be provided for both heavy equipment and gas-powered hand tools. Maintenance services will be required as needed.

EQUIPMENT

- Two (2) FEMA Type II On Road Dump Truck (DOT Class 8 10 Ton Dump Truck)
- Two (2) FEMA Type II Tracked Skid Steer with full attachment package and trailer

ACTIVATION

24 - 72 hours to organize and deploy



EXPLOSIVE ORDNANCE DISPOSAL TEAM

10

13

MISSION STATEMENT

Nebraska National Guard's Explosive Ordnance Disposal (EOD) unit is trained to detect, locate, access, identify, diagnose, render safe, collect, and dispose of explosive ordnance to include improvised explosive devices, improvised/homemade explosives, and weapons of mass destruction. Nebraska's National Guard EOD supports Local, State, and Federal agencies as requested through proper channels.

CAPABILITIES



PERSONNEL

Most Operations (2) personnel, however, can surge depending on request/need.

SPECIAL INSTRUCTION

Availability is based on Department of Defense and National level priorities.

EQUIPMENT

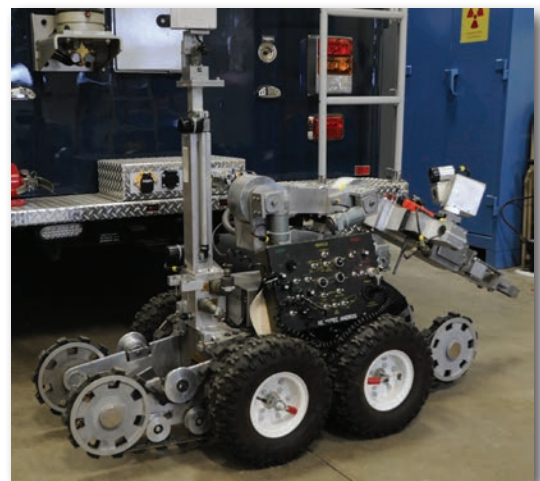
- One (1) trailer mounted, gas-tight explosive containment vessel.
- One (1) 38-foot multi-mission, climate-controlled response vehicle used in support of explosive and ordnance disposal operations.

ACTIVATION

EOD is on call 24-7 and can respond within hours of the request.

COST ESTIMATE

Usually no associated cost.



JOINT INCIDENT SITE COMMUNICATIONS (JISCC) MODIFIED FEMA TYPE 2 MOBILE COMMUNICATIONS CENTER

2

MISSION STATEMENT

JISCC provides incident site communications support for sites with no network, telephone, or radio interoperability. Due to unique network structure, can support military units and civilian agencies concurrently or independently. Provides communications support to first responders, civilian authorities and communities, and other co-located resources. Long haul data and voice communications via satellite, to include Voice over Internet Protocol (VOIP) and analog phones, computers. Radio interoperability between multiple commercial and tactical radio systems.

CAPABILITIES



- Cross banding capability between different communications equipment and frequencies.
- Campus wide area networks (Wi-Fi) extension up to two miles. Operating range extension up to 20 miles.
- Can operate two sites geographically separated using one satellite system and microwave point to point transmitters.
- Extension of wireless services into Hot Zones using Breadcrumb man-pack systems.
- Capable of commercial only services to support civilian communities.

SPECIAL INSTRUCTION

Requires 100'x100' area capable to staking and grounding, 80' vertical clearance.

ACTIVATION

24 - 72 hours to organize and deploy



NATIONAL GUARD RESPONSE FORCE - MILITARY POLICE - LAW ENFORCEMENT SUPPORT MILITARY- MODIFIED FEMA TYPE 2 MOBILE FIELD FORCE

MISSION STATEMENT

On order, the NGRF provides scalable support to the security needs of civil authorities and other military task forces, using a rapid reaction force, a larger follow-on force, and a just-in-time trained reinforcing capability. The NGRF can provide presence or show of force patrols, roadblocks, check points, and traffic control measures as required by civil authorities in a response to civil disturbances and as a force protection and security for military and civilian responders.

CAPABILITIES

1. Crowd management and crowd control including:
 - Perimeter control.
 - Staffing traffic control points.
 - Security at critical facilities.
 - Demonstrator and protestor escort.
 - Protective front-line formations.
 - Saturation patrols.
2. Maintains orders and preserves the peace.
2. Provides support for:
 - All-Hazard risks and events.
 - Natural disasters.
 - Terrorist incidents.
 - Crime scene protection.
3. Arrests law violators (if deputized by requesting state).
4. Other identified law enforcement support as requested.

PERSONNEL

Thirty (30) personnel, including two (2) Team Leaders and twenty-eight (28) team members who are all fully trained/qualified Military Police

SPECIAL INSTRUCTION

Does not deploy with a qualified NIMS Type 1 Patrol Team Supervisor; rather with organic military command and control. Rules for the use of force (RUF) memorandum of understanding (MOU) must be reviewed and signed by both Governors prior to deployment. Patrol team members must be deputized by the state prior to arresting any law violators.

EQUIPMENT

- High Mobility Multipurpose Wheeled Vehicle (HMMWV)
- 28-44 Passenger Bus
- Cargo Pickup Truck with Hitch
- Cargo Trailer
- 12-16 Passenger Van
- Long Range Acoustic Device (LRAD) Portable Acoustic Hailing Device
- Thirteen (13), L3 Harris Programmable Handheld Radios
- Non-Ballistic shields
- PPE Modules
 - Non-Ballistic Elbow/Forearm and Shin Guards
 - Face Shields
 - Batons and Belts
 - Gloves
 - Safety Vests
- Gear Modules
 - Bullhorn
 - Various Lighting
 - Flex Cuffs
 - Ammo Pouches

ACTIVATION

24 - 72 hours to organize and deploy

WILDLAND FIRE HAND CREW MODIFIED FEMA TYPE 3

4

MISSION STATEMENT

On order, the NG-JERC provides scalable support to civil authorities during wildland fire and wildland-urban interface fire incidents by providing National Wildfire Coordinating Group NG-JERC qualified hand crews, ground firefighting assets, and firefighting assets for ground or arial fire suppression and emergency aeromedical evacuation.

CAPABILITIES



- Constructs fire lines with hand tools and chainsaws.
- Burns out areas using drip torches and other firing devices.
- Mops-up and rehabilitates of burned areas.
- Performs other duties as appropriate, such as road clearing.

PERSONNEL

20 Firefighters consisting of:

- one (1) Liaison Officer
- one (1) Crew Boss equivalent (not FEMA certified)
- two (2) Squad Leaders
- sixteen (16) squad members

SPECIAL INSTRUCTION

Hand Crew does not deploy with a qualified FEMA Crew Boss (CRWB); however, will deploy with organic Military Firefighter command and control.

EQUIPMENT

- Mission Specific Personal Protective Equipment (PPE)
- National Fire Protection Association (NFPA) Type III Fire Engine
- NFPA Type IV Fire Engine
- Truck with Gooseneck Hitch and Cargo Trailer
- 12-16 Passenger Van
- Wildland Fire Hand Tools
- Motorola Portable Programmable Handheld Radios

ACTIVATION

24 - 72 hours to organize and deploy



EMERGENCY MANAGEMENT

10

13

MISSION STATEMENT

To prepare for, respond, and support in domestic and foreign emergencies.

CAPABILITIES



Prepares, plans, educates, trains, and equips personnel and installation leaders on ways to respond, mitigate, and recover from all hazards.

- Ensures mission continuation and force survivability during major accidents, natural-disasters, weapons of mass destruction, and wartime Chemical, Biological, Radiological and Nuclear (CBRN) events.
- Provides CBRN intelligence analysis and recommendations, allowing commanders to make risk-based decisions during all phases of emergency response operations.

PERSONNEL

- 3 EM Craftsman
- 2 EM Journeyman
- 1 EM Apprentice

EQUIPMENT

- Emergency Response Trailer
- CBRN Decontamination Trailer
- CBRN Response Trailer

SPECIAL INSTRUCTION

Emergency Managers are specially trained to augment your incident. They can integrate into your Incident command structure. They are also willing to assist during a disaster response or recovery operations.

ACTIVATION

24-72 hours to prepare and deploy

COST ESTIMATE

State Active-Duty Rate and Per Diem



MILITARY POLICE - LAW ENFORCEMENT SUPPORT MILITARY MODIFIED FEMA TYPE 4 PATROL TEAM (X2 TEAMS)

MISSION STATEMENT

On order, the NGRF provides scalable support to the security needs of civil authorities and other military task forces, using a rapid reaction force, a larger follow-on force, and a just-in-time trained reinforcing capability. The NGRF can provide presence or show of force patrols, roadblocks, check points, and traffic control measures as required by civil authorities in a response to civil disturbances and as a force protection and security for military and civilian responders.

CAPABILITIES



- Prevents, detects, and deters criminal activity.
- Assists law enforcement.
- Responds to calls for service.
- Promotes traffic safety.
- Promotes peace and civil order.
- Arrests law violators (if deputized by requesting state).
- Other identified law enforcement support as requested.

PERSONNEL

Thirty (30) personnel, including two (2) Team Leaders and twenty-eight (28) team members who are all fully trained/qualified Military Police

SPECIAL INSTRUCTION

Does not deploy with a qualified NIMS Type 1 Patrol Team Supervisor; rather with organic military command and control. Rules for the use of force (RUF) memorandum of understanding (MOU) must be reviewed and signed by both Governors prior to deployment. Patrol team members must be deputized by the state prior to arresting any law violators.

EQUIPMENT

- High Mobility Multipurpose Wheeled Vehicle (HMMWV)
- 28-44 Passenger Bus
- Cargo Pickup Truck with Hitch
- Cargo Trailer
- 12-16 Passenger Van
- Long Range Acoustic Device (LRAD) Portable Acoustic Hailing Device
- Thirteen (13), L3 Harris Programmable Handheld Radios
- Non-Ballistic shields
- PPE Modules
 - Non-Ballistic Elbow/Forearm and Shin Guards
 - Face Shields
 - Batons and Belts
 - Gloves
 - Safety Vests
- Gear Modules
 - Bullhorn
 - Various Lighting
 - Flex Cuffs
 - Ammo Pouches

ACTIVATION

24 - 72 hours to organize and deploy

COST ESTIMATE

See page 33.



DEFENSE CYBERSPACE OPERATIONS - ELEMENT (DCO-E) -MODIFIED FEMA CYBER INCIDENT RESPONSE TEAM

3

MISSION STATEMENT

On order, the DCO-E provides cyber security advisors to state, local, tribal, territorial governments, and any other civilian partner requiring assistance. The DCO-E can assist with network security assessment, aid in defensive cyber operations specific to an event or period of non-disruption or provide incident advisors to a suspected or known network compromise.

CAPABILITIES



- Investigates and analyzes all relevant cyber and network activities related to the crisis situation with the purpose of achieving the speediest recovery of the impacted critical infrastructure service.
- Uses mitigation, preparedness, response, and recovery approaches, as needed, to maximize survival of life, preservation of property, and information security.

ACTIVATION

24 - 72 hours to organize and deploy





NEBRASKA

Good Life. Great Strength.

NEBRASKA MILITARY DEPARTMENT



NEBRASKA NATIONAL GUARD INDIVIDUAL RESOURCES

NEBRASKA

Good Life. Great Strength.

NEBRASKA MILITARY DEPARTMENT

SAFETY AND SECURITY

MOBILE OPERATIONS CENTER (MOC)

Three (3) M-1087 expandable van mounted on a 6x6 - 5 ton truck chassis with a 10K trailer mounted generator equipped with commercial off-the-shelf equipment.

Capable of providing a mobile command and control center used by a joint National Guard task force in support of the incident commander of an all-hazards type disaster response situation.



INCIDENT COMMAND POST (ICP) DEPLOYABLE RAPID ASSEMBLY SHELTER (DRASH) TENT SYSTEM

One (1) large, eleven (11) medium transportable, trailer mounted tent system with an internal power generation system and environmental control unit.

Capable of providing a 210 square foot mobile command and control center used by a joint National Guard task force in support of the incident commander of an all-hazards type disaster response situation.



LONG RANGE ACOUSTIC DEVICE (LRAD) 100X

The LRAD 100X is a self-contained, portable communication system for on-scene and tactical communication. It provides powerful, intelligible communication up to 600 meters, focused directional broadcasts for targeted communication, safe communication beyond stand-off distances, creates an instant acoustic standoff perimeter, and delivers clearly heard and understood communications into buildings and vehicles.

It features an 8 hour rechargeable battery, an MP3 player that records and plays up to two gigabytes of messages and tones.



SAFETY AND SECURITY

TYPE III ENGINE AND TYPE VI BRUSH PATROL PUMPER AND FIRE TOOLS



Accompanied with our hand crew is a Type III Engine and VI Brush Patrol Pumper to aide our hand crew in efficient wildland firefighting.

Accompanied with our basic wildland fire hand tools, fire shelters and portable radio system, the NGWF-TF has a hand held Rockwell Collins GPS system to aide in navigation once at the emergency incident. The NGWF-TF maintains a constant state of readiness and stays up-to-date on evolving wildland firefighting tactics.



HELIBASKET EXTERNAL LOAD TRANSPORT SYSTEM

Two (2) multi-person rescue devices designed to be used with helicopter platforms for remote and inaccessible area rescue operations. Capable of lifting up to fifteen persons or 5,100 pounds of cargo.

EMERGENCY RESPONSE TEAM



One (1) twenty-four (24) person emergency response team equipped with transportation and commercial off-the shelf equipment. Primary role is to aid civilian first responders during natural disasters.

Capable of providing seventy two (72) hours of self-sustaining operations during flooding, urban search and rescue (SAR), and trench rescue events. Response includes technical rope, water rescue, area search and rescue, structural collapse rescue, confined space rescue, technical trench collapse rescue, and emergency communications.

FOOD, WATER, SHELTER

MOBILE KITCHEN UNIT

Mobile Kitchen x 24. Trailer mounted feeding system used to prepare and serve food in field environment.

Variied Output: 250-800 persons served per meal.

Some variants require external refrigeration.



MOBILE KITCHEN UNIT

Single Pallet Expeditionary Kitchen (SPECK) x2.

Feeding system used to prepare, heat, and service meals in field environment.

Output: 550 persons per meal.

Requires external transportation and forklift.



FOLD-OUT SHELTER SYSTEM (FORTS)

Rapidly deployable shelter that can be transported to an incident and functional within 20 minutes.

Contains HVAC systems and can run either on local utility power or on its own gasoline 8 kilowatt generator power.



FOOD, WATER, SHELTER



EMERGENCY SHELTER SUPPORT

Consists of cots, sleeping bags, and blankets.

Three hundred and ninety packages are maintained along the I-80 corridor and one hundred and ten packages are maintained at all other armories throughout the state.



TENTAGE

Three hundred and fifty-four medium-sized, general purpose frame tents equipped with heating units.

Capable of providing temporary shelter for up to 4,248 people.



WATER STORAGE

Thirty-three collapsible water drums, sixteen trailer mounted large capacity water tanks, and twenty-six trailer mounted medium capacity water tanks.

Capable of providing storage of 250 - 2,000 gallons of portable water.

HEALTH AND MEDICAL



MULTI-PATIENT MEDICAL TRANSPORT VEHICLE

M997 Ambulance x 16.

Capable of providing basic medical transportation services of up to four litter and eight ambulatory patients.

Capable for use over all types of roads, as well as cross-country terrain, and in all weather conditions.

PERSONNEL: Ambulance Ground Team – Type 2 (two BLS and driver qualified)



SEARCH AND EXTRACTION ELEMENT – CERFP (CBRNE ENHANCED RESPONSE FORCE PACKAGE)

One (1) fifty (50) person search and rescue response team equipped with civilian vehicles and commercial off-the-shelf equipment. Primary role is for response to weapons of mass destruction type incidents.

Capable of providing rope, structural collapse, and confined space search and rescue in either a chemically contaminated or uncontaminated environment.

ENERGY (POWER AND FUEL)



GENERATOR

Two hundred forty seven (247) mobile skid or trailer mounted generator systems used to provide emergency electrical power.

Gasoline or diesel powered variants are capable of providing 2 Kilo Watts per hour (Kw/hour) to 60 Kw/hour of electrical power.



FUEL STORAGE AND DISTRIBUTION

Forty-four (44) truck or trailer mounted fuel storage and distribution systems used to provide all types of fuel in field environments.

Variants are capable of providing between 500 and 5,000 gallons of fuel storage and distribution at rates up to 50 gallons per minute.



ENVIRONMENTAL CONTROL UNIT (ECU)

Eight (8) portable HVAC units.

Capable of providing emergency heating and cooling for up to 3,200 square feet of indoor space.

COMMUNICATIONS



ADVANCED ECHELON (ADVON)

One vehicle, up to four-person team, equipped with commercial off the shelf communications equipment.

Primary role in response to CBRNE disasters.

Capable of providing satellite communications while mobile and stationary, high speed wireless data, self-sustaining power system, three VoIP wireless phones, printer, fax, satellite phone, portable cross band repeater, and radio (UHF, VHF, Statewide, 800MHz) communication.

UNIFIED COMMAND SUITE (UCS)



One vehicle with two person communications teams with commercial off the shelf communications equipment.

Plans, coordinates, operates, and maintains internal and external voice and data networks and reach-back capability for technical assistance in support of the CTS Commander and the Incident Mangement System.

Maintains communications with the incident Commander, and local, state, and federal agencies.

Primary role is support for CBRNE.

Satellite connection internet, eight VoIP phone lines, HF, VHF, UHF radios, statewide radio system, radio crossbanding, crossband repeater, Video Teleconference System (VTC), printer, fax, and secure communications.

COMMUNICATIONS



DISMOUNTED STRIKE KIT (DSK)

One Civil Support Team (CST) operator with a commercial off the shelf, man pack, air loadable communication strike kit.

Primary role is to support elements of the CST for a strike team response to CBRNE.

Capabilities include video, VoIPx1, and data on either the commercial or government network.

The DSK connects with Satellite Communications (SATCOM) Terminal, Point-to-Point Wi-Fi bridge (wireless WAN), or High-Speed Cellular Data (Verizon) to provide wired and wireless network internet access to government and commercial networks.



PORTABLE AND HAND HELD RADIOS

Commercial and military handheld radios used for line-of-sight two-way communication.

Variants can provide two way digital or Very High Frequency (VHF) communications up to 35 miles.

Powered by commercial, or lithium and rechargeable batteries.

JOINT INCIDENT SITE COMMUNICATIONS CAPABILITY (JISCC)

One (1) self-contained communications trailer designed for deployment by ground or air assets to enable interagency communications and limited satellite services for disaster response situations.

Capable of providing cross banding systems for interoperability with up to 18 organizational radio nets to include first responders. Integrates secure satellite and wireless communications, land mobile radios, High Frequency Automatic Link Establishment (HF ALE), Voice Over Internet Protocol (VoIP) telephones, and video teleconferencing.



TRANSPORTATION

HIGH MOBILITY MULTIPURPOSE WHEELED VEHICLE (HMMWV)

Three-hundred-forty-four (344) 4x4 tactical trucks located at various locations throughout the state. Some of these vehicles are sheltered and equipped with chains during winter months for winter contingencies.

Capable for use over all types of roads, as well as cross-country terrain, and in all weather conditions. Some variants can transport up to 1.5 tons of cargo or 8 persons. Deep water fording capability of up to 30 inches. Effective range is 300 miles before need of refueling.



FAMILY OF MEDIUM TACTICAL VEHICLES (FMTV) CARGO

Three hundred thirty six (336) 4x4 and 6x6 tactical trucks located at various locations throughout the state. Some of these vehicles are sheltered and equipped with chains during winter months for winter contingencies.

Can transport up to 2.5 to 5 tons of cargo or 20 persons plus crew. Equipped without winches or with winches and 308 feet of wire cable and 10,000 pounds bare drum capacity. Effective range is 300 miles before need of refueling.



SEMI-TRACTOR AND TRAILER

One-hundred-thirteen (113), 14 ton 6x4 line-haul tractor variants located at various locations throughout the state.

Can transport 22.5 to 34 tons of containerized or bulk cargo or 40 persons using a flat-bed trailer configuration. Can also transport bulk fuel and water. Effective range is 450 miles before need of refueling.



TRANSPORTATION



ALL-TERRAIN VEHICLE (ATV)

Thirty-nine (39) commercial all terrain 4x4 vehicles.

Can transport 1 to 2 passengers over all types of terrain.



GENERAL SERVICES ADMINISTRATION (GSA) PICKUP

Thirty-nine (39) light to medium duty pickup trucks located at various locations throughout the state.

Can transport 2 to 6 passengers. Effective range is 350 miles before need of refueling.



ZODIAC BOATS

Nine Zodiac Boats can be used for over-the-horizon transportation, inserting lightly geared parties or reconnaissance teams onto beaches, piers, offshore facilities, and larger vessels.

Inflates in minutes by foot pump, compressor, or CO2 tank and deploys from shore and a variety of vessels and aircraft.

Lightweight, compact size when stowed, stealth, versatility, and safety imparted by its super-buoyant nature, allowing operation in relatively high seas.



GENERAL SERVICES ADMINISTRATION (GSA) BUS

Three (3), 25 passenger and three (3), 44 passenger general purpose busses located at various locations throughout the state.

Can transport 25 to 44 passengers over semi-improved roads. Effective range is 250 miles before need of refueling.

HAZARDOUS MATERIALS

ALL-HAZARD MONITORING DURING SPECIAL EVENTS



Capable of providing multiple two (2) person teams of HazMat technicians and one (1) Command Post (CP) representative as requested by outside agencies for events with high national visibility and/or volume of attendees to support law enforcement security efforts. Teams are in appropriate civilian clothing with civilian backpacks to avoid drawing undue attention or concern. Teams emplace up to twelve (12) AreaRAE monitors (more can be requested) with hazardous chemical and radiation sensors that can be monitored in real time from the CP in venue entrances or high traffic areas. Teams will sweep entire venue with handheld chemical and radiological equipment prior to event to ensure nothing potentially hazardous has been emplaced. As venues are opened, teams are stationed at high volume entrances with handheld equipment to provide redundancy in monitoring. Teams are on scene throughout duration of event and rove with

their handheld equipment to provide continuous mobile monitoring in addition to the fixed AreaRAE monitoring. Teams carry equipment for basic response and can collect limited samples of substances if needed. Full team capability and equipment can be deployed for specific response within 90 minutes.



LIGHTWEIGHT INFLATABLE DECONTAMINATION SYSTEM (LIDS)

Two self-contained transportable decontamination systems used in support of responders to chemical, biological, or radiological incidents.

Capable of providing controlled entry areas for first responder crews, ensuring effective contamination avoidance procedures and limiting the spread of contamination into cold zones.



LARGE MASS DECONTAMINATION SHOWER SYSTEM

Three self-contained, transportable decontamination systems used in support of mass casualty situations.

Capable of providing personnel decontamination for up to 225 ambulatory and 75 non-ambulatory patients per hour.





NEBRASKA

Good Life. Great Strength.

NEBRASKA MILITARY DEPARTMENT



NEBRASKA NATIONAL GUARD READINESS CENTERS

NEBRASKA

Good Life. Great Strength.

NEBRASKA MILITARY DEPARTMENT

READINESS CENTERS

BEATRICE

1400 West Scott Road; Beatrice, NE 68310

Assembly Hall: 6,038 square feet * **Emergency Shelter:** 10 people
Fix Generator Building Power



GERING

1250 D Street; Gering, NE 69341

Assembly Hall: 5,473 square feet * **Emergency Shelter:** 25 people



CAMP ASHLAND

220 Country Road A; Ashland, NE 68003

Continuity of Operations Site * **Emergency Shelter:** 643 people
Assembly Hall 1: 3,361 square feet * **Assembly Hall 2:** 3,791 square feet



GRAND ISLAND

3090 East Airport Road; Grand Island, NE 68801

Continuity of Operations Site
AASF Hangar Space: 25,000 square feet
RC Assembly Hall: 6,211 square feet * **Emergency Shelter:** 25 people



CHADRON

485 East 12th Street; Chadron, NE 69337

Assembly Hall: 4,771 square feet



GREENLIEF TRAINING SITE

6700 East J Street; Hastings, NE 68901

Alternate Continuity of Operations Site
Assembly Hall: 6,037 square feet * **Emergency Shelter:** 650 people
Fix Generator Building Power



COLUMBUS

2018 Armory Drive; Columbus, NE 68601

Assembly Hall: 5,782 square feet * **Emergency Shelter:** 25 people
Fix Generator Building Power



KEARNEY

5710 Airport Road; Kearney, NE 68847

Assembly Hall: 6,263 square feet * **Emergency Shelter:** 25 people



READINESS CENTERS

LINCOLN 1776

1776 North 10th Street; Lincoln, NE 68508

Assembly Hall: 9,371 square feet * **Emergency Shelter:** 25 people



MEAD TRAINING SITE

789 County Road J; Mead, NE 68073

ATLAS

Assembly Hall: 5,342 square feet * **Emergency Shelter:** 25 people



ARMY AVIATION SUPPORT FACILITY

2400 Northwest 25th Street; Lincoln, NE 68524

Hangar: 25,999 square feet



TITAN

785 County Road J, Yutan, NE 68073

Assembly Hall: 5,316 square feet * **Emergency Shelter:** 25 people



PENTERMAN

2400 Northwest 24th Street; Lincoln, NE 68524

Assembly Hall: 9,244 square feet * **Emergency Shelter:** 25 people



NORFOLK

817 South 1st Street; Norfolk, NE 68701

Assembly Hall: 5,473 square feet * **Emergency Shelter:** 25 people



McCook

38709 East Highway 6 and 34; McCook, NE 69001

Assembly Hall: 4,673 square feet * **Emergency Shelter:** 10 people



NORTH PLATTE

1700 North Jeffers; North Platte, NE 69101

Assembly Hall: 5,800 square feet * **Emergency Shelter:** 25 people



READINESS CENTERS

NORTH OMAHA

11650 Rainwood Road; Omaha, NE 68142

Assembly Hall: 6,577 square feet * **Emergency Shelter:** 25 people
Fix Generator Building Power



WAHOO

338 West 15th Street; Wahoo, NE 68066

Assembly Hall: 5,400 square feet



SOUTH OMAHA

6929 Mercy Road; Omaha, NE 68106

Assembly Hall: 6,901 square feet * **Emergency Shelter:** 25 people



WAYNE

800 East 7th Street; Wayne, NE 68787

Assembly Hall: 4,757 square feet * **Emergency Shelter:** 10 people



SCOTTSBLUFF

2810 1st Avenue; Scottsbluff, NE 69361

Assembly Hall: 5,504 square feet * **Emergency Shelter:** 25 people
Fix Generator Building Power



YORK

1129 East 6th Street; York, NE 68467

Assembly Hall: 5,453 square feet * **Emergency Shelter:** 25 people



SIDNEY

2225 Legion Park Road; Sidney, NE 69162

Assembly Hall: 5,417 square feet * **Emergency Shelter:** 25 people



